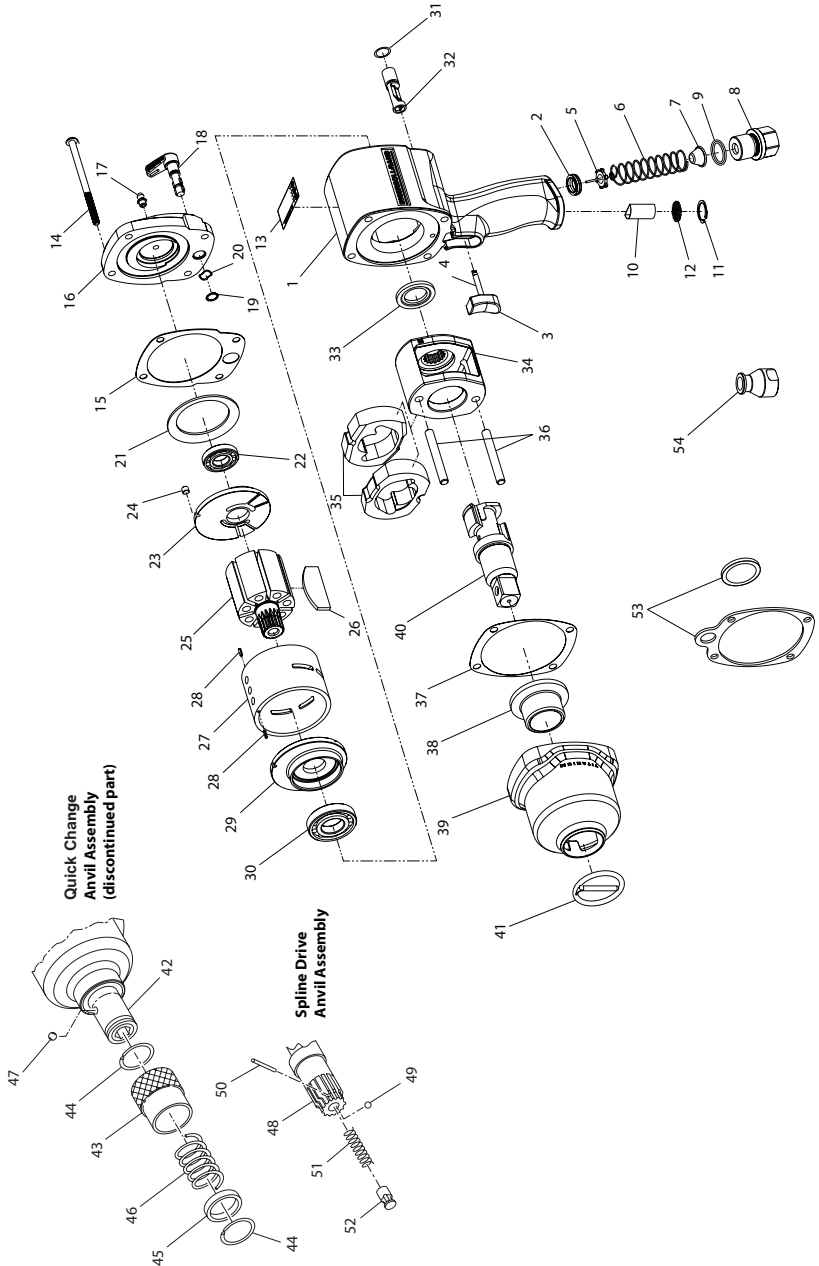


2925Ti Series, Air Impact Wrench - Exploded View



(Dwg. TPA1580-2)



04584561
Edition 11
October 2021

2925Ti Series, Air Impact Wrench - Parts List

Item	Part Description	Part Number	Item	Part Description	Part Number
	Motor Housing Assembly	2925-A40	29	Front End Plate	2925-11
1	Motor Housing	2925-B40	30	Front Rotor Bearing	834-24
2	Throttle Valve Seat	DG230-303	† 31	Reverse Valve O-Ring	023446
	Trigger Assembly	2161-A93R	32	Reverse Valve	2161-329
3	Trigger	2161-93R	33	Hammer Frame Washer	2161-706
4	Trigger Pin	2161-94	34	Hammer Frame	2925-703
5	Throttle Valve	2921-302	35	Hammer (QTY. 2)	2925-724
6	Throttle Valve Spring	2161-51	36	Hammer Pin (QTY. 2)	2910-704
7	Air Strainer Screen	834-61	† 37	Hammer Case Gasket	2161-36
	Inlet Bushing Assembly	2161-A465A		Hammer Case Assembly	
8	Inlet Bushing	2161-465A		for 2925P1Ti, 2925P3Ti, 2925RBP1Ti, and 2925RBP3Ti	2190Ti-D727
9	Seal	R4-210		for 2925RBP1TiEX	2190TiEX-D727
10	Muffler Element	202-311			
11	Retaining Ring	2161-118		Hammer Case Bushing	
12	Exhaust Deflector	2161-23		for 2925P1Ti, 2925P3Ti, 2925RBP1Ti, and 2925RBP3Ti	2161-641
13	Warning Label	WARNING-2-99		for 2925RBP1TiEX	2161EX-641
*	ATEX Spec Label	ATEX-301A		Hammer Case	2190Ti-727
14	Backcap Bolt (QTY. 4)	2925-638	39	Hammer Case	2190Ti-727
† 15	Backcap Gasket	2161-739	40	Anvil	
	Backcap Assembly	2925-A102		3/4" Square Drive	2910-726
16	Backcap	2925-102		1" Square Drive	2910-826
17	Grease Fitting	R1-188		Socket Retainer	
18	Reverse Lever	2925-658	41	for 3/4" Square Drive	RR100345
19	Reverse Lever Snap Ring	2161-28		for 1" Square Drive	RR100155
20	Reverse Lever Spring	2161-278	**	Quick Change Anvil Assembly	<i>discontinued</i>
21	Motor Clamp Washer	2161-207	42	Quick Change Anvil	---
22	Rear Rotor Bearing	4E-510	43	Retaining Sleeve	---
23	Rear End Plate	2925-12	44	Thrust Ring Lock (QTY. 2)	---
24	Locating Pin	2920-74	45	Thrust Ring	---
25	Rotor	2925-53	46	Retaining Sleeve Spring	---
† 26	Vane Packet (set of 7 vanes)	2925-42-7	47	Retaining Ball	---
	Cylinder Assembly			No. 4 Spline Drive Anvil	2910-A526
	for 2925P1Ti and 2925P3Ti	2925-A3	48	Anvil	2910-526
	for 2925RBP1Ti, 2925RBP3Ti and 2925RBP1TiEX	2925RB-A3	49	Socket Retaining Ball	G601-65
27	Cylinder		50	Retaining Ball Plunger	910-230
	for 2925P1Ti and 2925P3Ti	2925-3	51	Ball Plunger Spring	125R-262
	for 2925RBP1Ti, 2925RBP3Ti and 2925RBP1TiEX	2925RB-3	52	Plunger Retaining Pin	7L-120
			53	Hanger Kit	2161-366
28	Cylinder Dowel (QTY. 2)		54	Piped-Away Exhaust (accepts 1/2"-14 NPT male-fitting)	2161-123
	for 2925P1Ti and 2925P3Ti	JC3350-538	*	Grease	
	for 2925RBP1Ti, 2925RBP3Ti and 2925RBP1TiEX	JC3350-538		1 lb.	170-1LB
				8 lb.	170-8LB

* Indicates not illustrated.

† Indicates common-wear parts. Maintain stock to reduce downtime.

** Part no longer available.

Parts and Maintenance

When tool life has expired, it is recommended that the tool be disassembled, degreased and parts separated by material for proper recycling.

Tool repair and maintenance should only be carried out by an authorized Service Center.

Refer all communications to the nearest **Ingersoll Rand** office or distributor.

Related Documentation

Manuals can be downloaded from ingersollrand.com

For additional information, refer to:

Product Safety Information Manual 04580916 and 47559151001 (ATEX).

Product Information Manual 16573206.

Product Maintenance Manual 04584348.

